









Copyright: This pattern is for personal use only. Its copying, translation or distribution in any form is prohibited.

## Contact information

If you have any questions when making this pattern, do not hesitate to contact me.  
Also, I would love to see your finished amigurumi

-  linetr2011@gmail.com
-  GretaWings <https://www.instagram.com/gretawings/>
-  GretaWings [https://www.facebook.com/gretawings/?ref=pages\\_you\\_manage](https://www.facebook.com/gretawings/?ref=pages_you_manage)
-  GretaWings <https://www.youtube.com/channel/UCz8UB400yzrx6XS9Ncvy7nA>
-  Greta Wings in English [https://www.youtube.com/channel/UCr4xjdD89uaRXwKnJb6u7\\_g](https://www.youtube.com/channel/UCr4xjdD89uaRXwKnJb6u7_g)
-  GretaWings <https://gretawings.com/>

## Important note:

### Copyright

This pattern is for personal use only.  
Its copying, translation or distribution  
in any form is prohibited.

You can sell the final result of your  
amigurumi in the way you choose.  
If you sell your finished item online  
please provide a link to our website in  
your description and that way you  
also support our project

This amigurumi is worked with well-  
adjusted stitches and for the most part in a  
spiral shape, do not close each round  
unless I tell you to, you will have to be  
careful and always mark the beginning of  
each round. Please read the entire pattern  
before beginning.

In the description, before buying this  
pattern, I told you that we have a tutorial  
on our channel to make this amigurumi.

You can enter the links that I share  
attached to each image if you have any  
questions.

If you detect any errors in this pattern  
please contact me.



This amigurumi is approximately 4 inches tall.

### Materials:

- Eulali brand Yarn 100% Mercerized Cotton, measures approximately 1mm thick and has 4 strands. Color: Flesh C-20 20g
- 1.50mm hook
- W Needle
- Scissors
- Temporary marker
- Pins
- hot silicone glue
- Stuffing for amigurumis
- Safety eyes 10mm
- 2 pipe cleaners 12" each or wire

<https://youtu.be/JEFtsC7VA48?t=76>

### Abbreviations:

A: Round  
ch: chain  
MR: Magic ring  
sc: single crochet  
dec: decrease (close 2pb together)  
inc: Increase (2sc in 1st)  
ss: Slipped stitch  
FLO: Front Loop Only  
BLO: Back Loop Only

Note: You can use this same pattern to make this amigurumi larger or smaller using a thread of greater or lesser thickness and depending on this thread will be the hook number.

I hope you enjoy this pattern as much as I did designing it for you.





Note: Make both feet up to R5, prepare hot silicone glue (optional) and pipe cleaners or wire (if you want to articulate your amigurumi).

<https://youtu.be/3EFtSc7VA48?t=303>



Watch the video for further understanding

<https://youtu.be/3EFtSc7VA48?t=750>



## Legs (x2)

<https://youtu.be/3EFtSc7VA48?t=303>

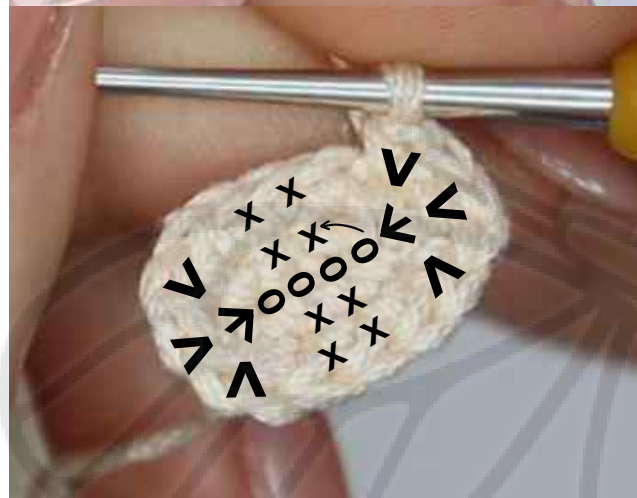
Use flesh-colored thread

Start with 1 slip knot

R1: 4ch, in the 2nd beg (2sc, 1 triple inc)x2 (10)

Note: Place a marker on chain number 4, right there perform the 2nd triple increase

R2: (2sc, 3inc)x2 (16)



R3: BLO 16sc

R4-5: 16sc

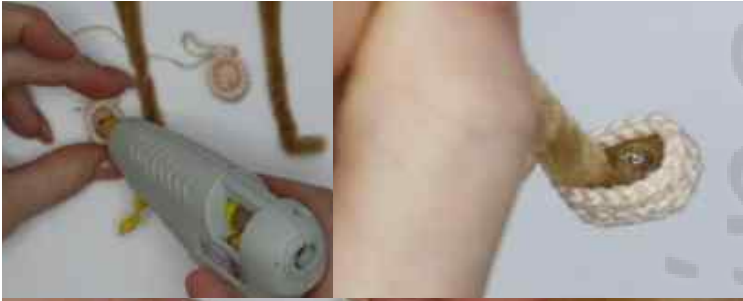


R6: 2sc, 4dec, 2sc, 2dec (10)

R7-12: 10sc

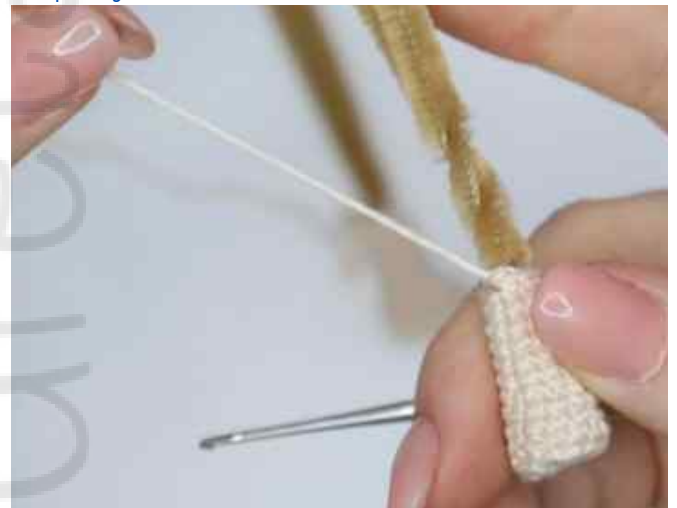
Note: Always fill as the fabric progresses.

<https://youtu.be/JEFtSc7VA48?t=1217>



Note: When finishing the 1st leg, make a chain to secure and cut the thread, it is not necessary to leave the thread long, however when you make the second leg, do not cut the thread or make a chain because you will then join the two.

<https://youtu.be/JEFtSc7VA48?t=1318>





R13: 2sc, 2ch, 10sc in the other leg, 2sc in the 2ch, 8sc (24)

Note: Maybe the knitting is different from ours and to achieve straight legs you will have to modify a little the beginning of this round with more or fewer stitches and also where to start the stitches on the other leg

<https://youtu.be/JEFtSc7VA48?t=1379>



R14-21: 24sc

R22: (2sc, 1dec)x6 (18)

Note: Place the pipe cleaners in place of the arms, between R21 and R22 on each side of the body  
(Watch video)

<https://youtu.be/JEFtSc7VA48?t=1772>



R23: (4sc, 1dec)x3 (15)

R24: 1sc, 1dec, (3sc, 1dec)x2, 2sc (12)

R25: (2sc, 1dec)x3 (9)

R26-33: 9sc

Note: Don't forget to place filling whenever you advance 2-3 rounds, also in the

<https://youtu.be/JEFtSc7VA48?t=2193>



Use wool needle to close.

<https://youtu.be/JEFtSC7VA48?t=2326>



## Arms (x2)

Use flesh-colored thread

R1: MR 8sc

R2-15: 8sc

Cut and leave the strand long for the union with the body.

<https://youtu.be/JEFtSC7VA48?t=2442>



Note: It is not necessary to place filling, joining the body is the next step

<https://youtu.be/JEFtSC7VA48?t=2507>





## Head

Use flesh-colored thread

R1: MR 6sc, close the round (see explanatory video)

Note: Please never turn the fabric inside out unless instructed to do so.

<https://youtu.be/t4lDePMERhg?t=55>



Note: All head rounds will be closed, will not work spiral

R2: 6inc, close (12)

R3: (2sc, 1inc)x4, close (16)

R4-9: 16sc, close



Note: Never turn this piece to get the hole where you can then place the body

<https://youtu.be/t4lDePMERhg?t=306>



R10: 1sc, 2inc, (2sc, 2inc)x3, 1sc, close (24)

R11: 2sc, 2inc, (4sc, 2inc)x3, 2sc, close (32)

R12: 3sc, 2inc, (6sc, 2inc)x3, 3sc, close (40)

R13: 4sc, 2inc, (8sc, 2inc)x3, 4sc, close (48)

R14: 5sc, 2inc, (10sc, 2inc)x3, 5sc, close (56)

R15: 6sc, 2inc, (12sc, 2inc)x3, 6sc, close (64)

R16: 7sc, 2inc, (14sc, 2inc)x3, 7sc, close (72)

R17-30: 72sc, close

Note: Do not turn the piece over until you have finished approximately R21, that way the corners will look better.

<https://youtu.be/t4lDePMERhg?t=1076>





Once turned like this the head should be seen and then continue with the following Rounds until finishing R32

<https://youtu.be/t4lDePMERhg?t=1161>



R31: 7sc, 2dec, (14sc, 2dec)x3, 7sc, close (64)

R32: 6sc, 2dec, (12sc, 2dec)x3, 6sc, close (56)

Place 10mm safety eyes between R21 and 22 with 11 points of separation before placing the eyes and positioning them as centrally as possible, doing so after the piece is well squared (see video to achieve a better cube)

<https://youtu.be/t4lDePMERhg?t=1372>



R33: 5sc, 2dec, (10sc, 2dec)x3, 5sc, close (48)

R34: 4sc, 2dec, (8sc, 2dec)x3, 4sc, close (40)

R35: 3sc, 2dec, (6sc, 2dec)x3, 3sc, close (32)

R36: 2sc, 2dec, (4sc, 2dec)x3, 2sc, close (24)

R37: 1sc, 2dec, (2sc, 2dec)x3, 1sc, close (16)

R38: 8dec, close (8)

Cut and leave the long thread to close using a wool needle.

Note: Continuing to place filling, using an extra instrument is usually very easy, please watch the shared video for further understanding.

<https://youtu.be/t4lDePMERhg?t=1847>



## Ears (x2)

Use flesh-colored thread  
MR 1sc, 1hdc, 1dc, 1hdc, 1sc

Do not close the magic ring and join  
the body at eye level with 8 points  
separating each of them

<https://youtu.be/t4lDePMERhg?t=2285>



## Nose

Use flesh-colored thread  
Embroider it with the same thread, as  
many stitches as the volume you want in it.

<https://youtu.be/t4lDePMERhg?t=2558>







Congratulations!!  
he has finished your amigurumi  
i.



If you have enjoyed our pattern and you publish your final work on your networks, do not forget to tag me so I can see the result

Remember this is a payment pattern, to which I have dedicated a lot of my time and love. I ask you in favor and out of respect for our project that you do not distribute it in groups or on the web because it harms us enormously and you would be committing a crime despite having bought it, you are buying the pattern, not the copyright and the rights to it same we belong to GretaWings, thanks